

8

7

6

5

4

3

2

1

D

D

C

C

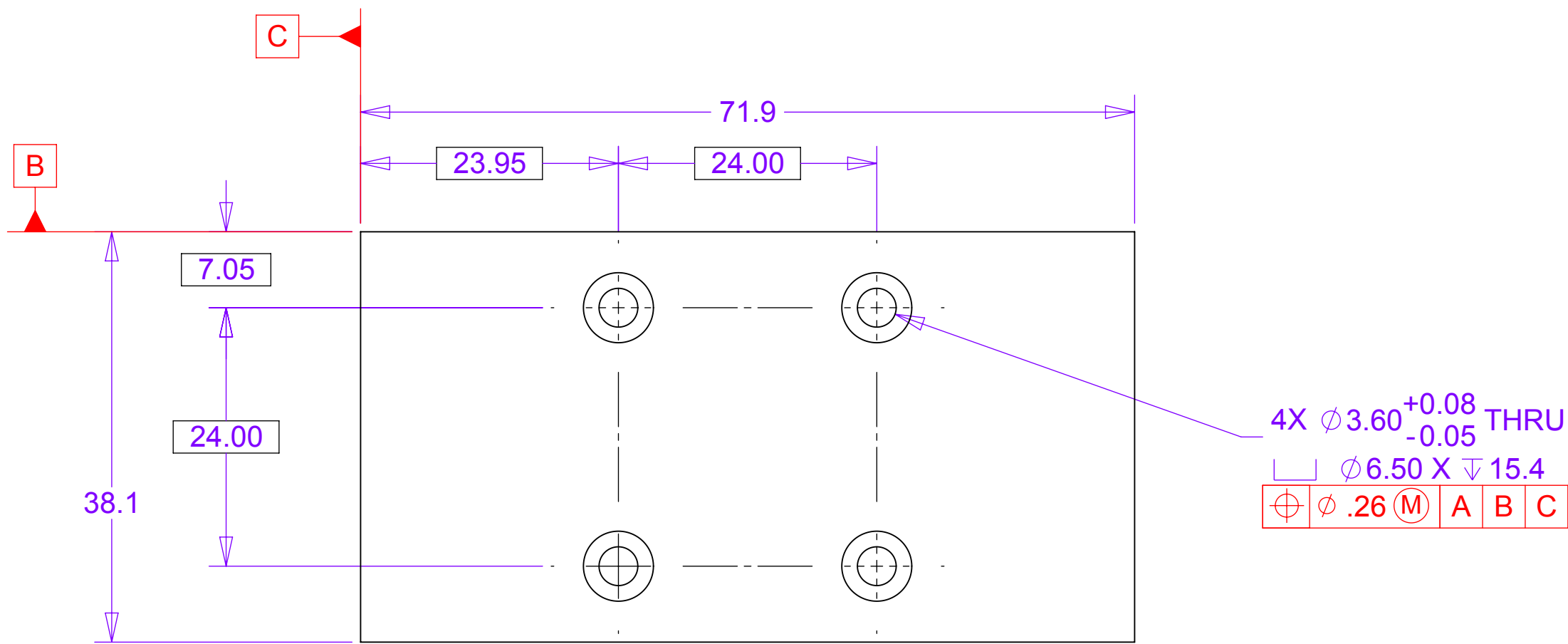
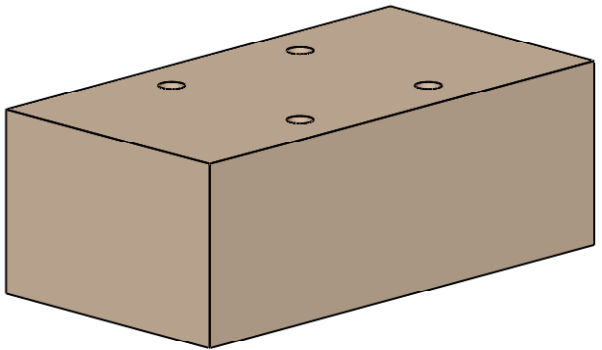
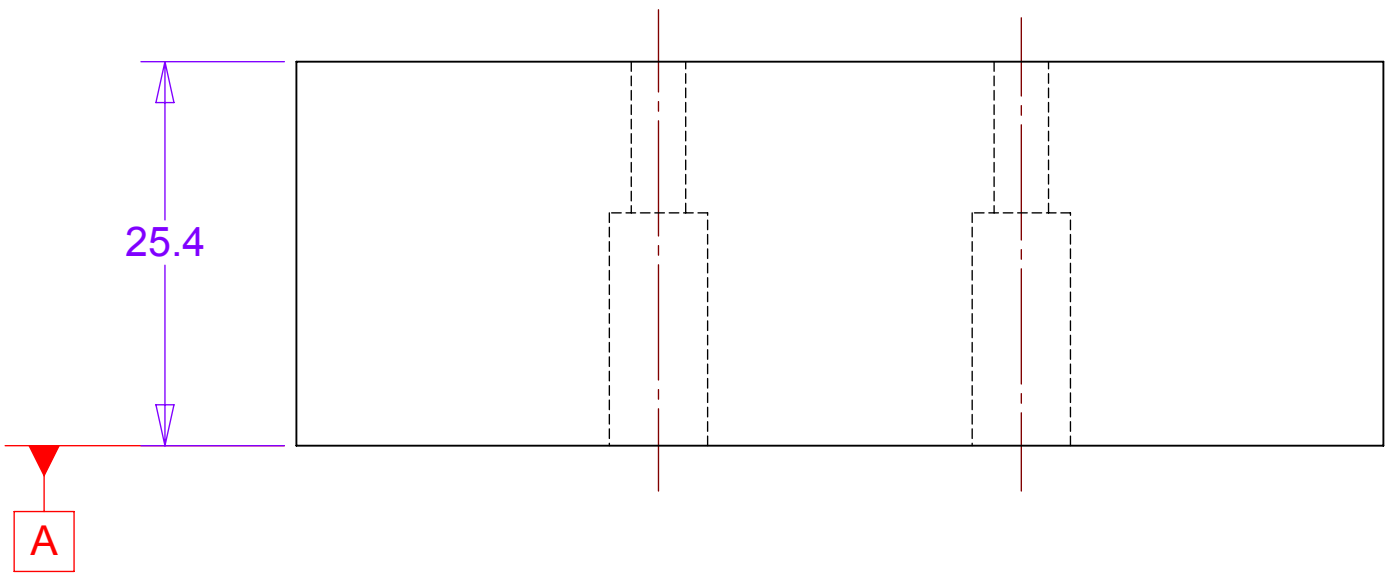
B

B

A

A

	REVISIONS			
REV	DESCRIPTION		DATE	APPROVED

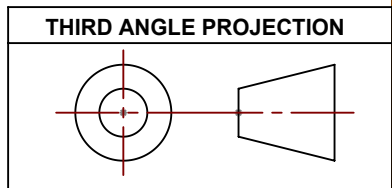


MATERIAL: Aluminum 6061-T6

NOTES: UNLESS OTHER WISE SPECIFIED

1. ALL DIMENSIONS IN MILLIMETERS
2. DIMENSIONS AND TOLERANCING PER ASME Y14.5M-1994
3. SURFACE TEXTURE PER ANSI/ASME B 46.1-1985
4. REMOVE ALL BURRS AND BREAK SHARP EDGES TO A MAXIMUM OF .4
5. ALL INSIDE CORNERS TO BE .4 RADIUS MAX
6. COUNTERSINK 82 DEGREES ALL TAPPED HOLES TO MAJOR DIAMETER
7. COUNTERSINK 82 DEGREES APPROXIMATELY .08/1.5 DEEP ALL DRILLED HOLES
8. PARTS TO BE THOROUGHLY CLEANED TO REMOVE ALL OIL, GREASE, DIRT AND CHIPS
9. PART NUMBER (DRAWING NO., DASH NO., REVISION NO., SERIAL NO.) TO BE CLEARLY MARKED ON THE PACKAGING BAG OR PART ITSELF.

THIS DOCUMENT CONTAINS INFORMATION THAT IS THE PROPRIETARY PROPERTY OF HYTEC, INC. REPRODUCTION, DISCLOSURE, OR RELEASE TO OTHERS, MANUALLY OR ELECTRONICALLY, IS STRICTLY PROHIBITED WITHOUT THE PRIOR WRITTEN CONSENT OF HYTEC, INC.



UNLESS OTHERWISE SPECIFIED: DIMENSIONS ARE IN MILLIMETERS -TOLERANCES-	CAD GENERATED DRAWING, DO NOT MANUALLY UPDATE DO NOT SCALE DRAWING	HYTEC, INC	
DECIMALS X = +/- .5 .X = +/- .1 .XX = +/- .01 .XXX = +/- .001	ANGULAR .X = +/- 30° .XX = +/- 15° SURFACE FINISH = 250	TITLE PHENIX CENTRAL UPGRADE FVTX DETECTOR STATION 1 THERMAL MOUNT PLACEMENT JIG RISER	
FINISH	DESIGNER	SIGNATURE	DATE
	DRAWN	ROGER L. SMITH	5/20/2010
PART NO. 111-PHX-01-5315-1	CHECKED	WALT SONDEHEIM	5/25/2010
	ENGINEER	RJ PONCHONE	5/20/2010
APPROVED		WALT SONDEHEIM	5/25/2010
DWG. NO. 111-PHX-01-5315		SIZE D	SHEET NO. 1 of 1
SCALE 2:1		REVISION	

8

7

6

5

4

3

2

1